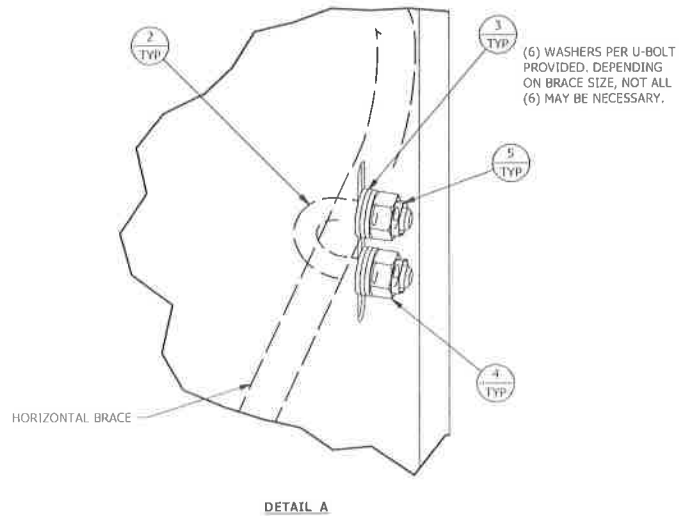


SECTION B-B



DETAIL A

P/N: ACL455 BILL OF MATERIALS				
ITEM	QTY	P/N	DESCRIPTION	DWG
1	3	VW925	ANTI-CLIMB PANEL 16GA 45-55G	VW925
2	9	JR69	U-BOLT 3/8 X 1-1/4 HDG	N/A
3	54	25000BG	WASHER 3/8 FLAT HDG F436	N/A
4	18	230005	NUT HVY HEX 3/8 GR 2H HDG	N/A
5	18	110159	NUT 3/8 ( JAM - PAL ) HDG	N/A

FILE NO.				
REVISION				
REV	DESCRIPTION	DWN	CHK	APP
1	REVISED ASSEMBLY NUMBER REVISED DRAWING NUMBER	CIW	JDM	DWG
DATE: 07/12/2013				
P.O. BOX 5999 PEORIA, IL 61601-5999 TOLL FREE 800-727-ROHN				
<small>THIS DRAWING IS THE PROPERTY OF ROHN. IT IS NOT TO BE REPRODUCED, COPIED OR TRACED IN WHOLE OR IN PART WITHOUT OUR WRITTEN CONSENT.</small>				
<b>ANTI-CLIMB PANELS 45&amp;55G &amp; GSR</b>				
DWN:	CHW	CHK'D:	JDM	DATE:
ENGR:	HA	SHEET #:	6/6/2013	
PRJ. ENGR:	PRJ. MANG'R:		1 OF 1	
DRAWING NO:				REV:
ACL455				1